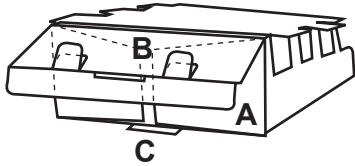


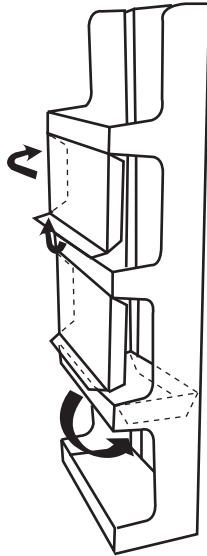
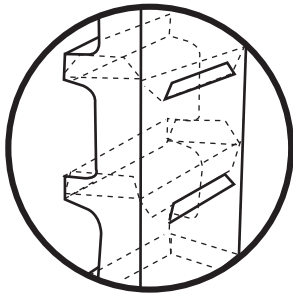


Model 9010 - Four Tier Floor Display

1. Pop open shelved tray. Fold bottom flaps (A) under and (B) over (A). Then lock (C) into (B).

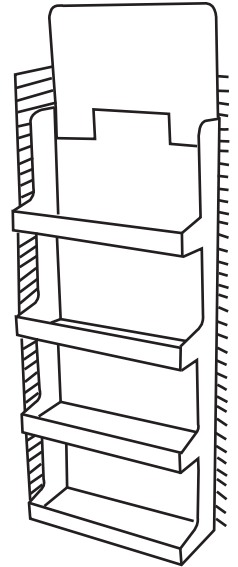


2. Fold shelved flaps as shown and push shelf up and under. Lock into each separate slot on back.



Powerwing Option

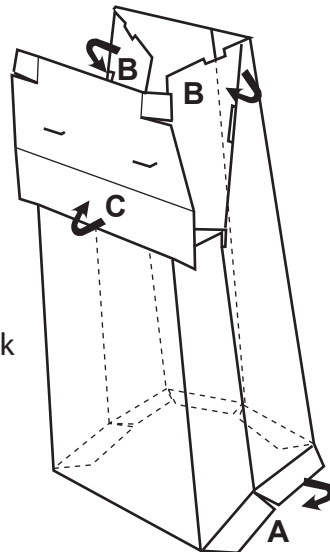
1. Put header in between very top slots and lock in. Put plastic clips in second slots on back for wire rack or hang display over peg hooks.



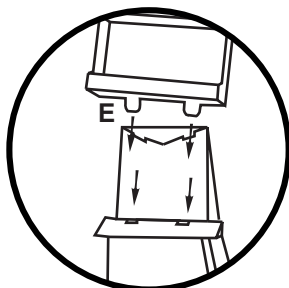
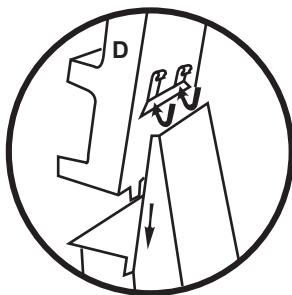
YOUR FINISHED DISPLAY

Powerwing on Base

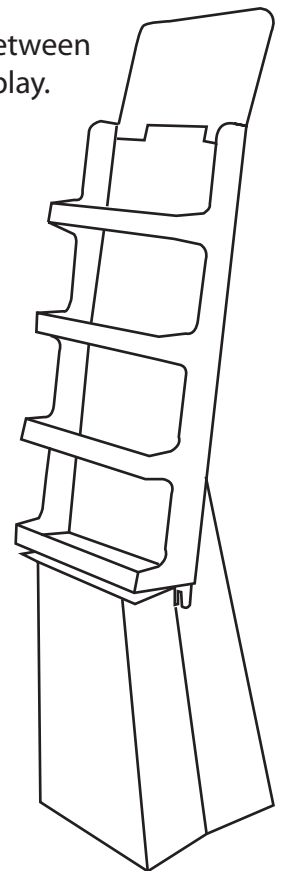
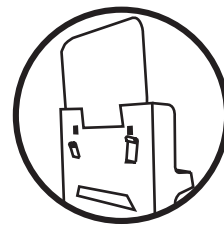
1. Square up base. Fold flaps (A) at the bottom under base. Fold top two side flaps (B) in towards each other. Fold shelf edge (C) and lock into slots on base.



2. Put plastic clips (D) in bottom slots and pull up. Then slide tray onto back of base. Tabs (E) on bottom of tray lock into shelf. Plastic clips fir over back of base.



3. Put header in between slots on top of display.



YOUR FINISHED DISPLAY